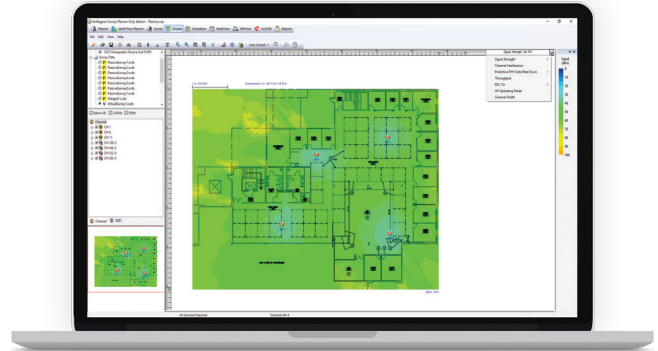


AirMagnet® Planner

Wi-Fi Network Planning Tool

Key Features

- Plan and design Wi-Fi networks (802.11a/b/g/n/ac) without physically rolling out any APs
- Optimize AP count and layout for maximized coverage and performance by modeling building construction materials/obstructions and AP placement
- Reduce time spent planning by quickly importing walls from CAD drawings
- Estimate Wi-Fi deployment budgets; generate installer-ready BOM reports
- Plan migration strategies as new users or technologies are introduced



Overview

Haphazard planning of a wireless deployment can lead to overspending, as well as under-served and less-than-thrilled end-users. The AirMagnet Planner is a Wi-Fi network planning tool that enables installers to accurately estimate the quantity, placement and configuration of access points needed to deliver full coverage and device capacity. This saves time, money, and frustration by accounting for building materials, obstructions, access point configurations, antenna patterns, and a host of other variables to provide a predictive map of Wi-Fi signal and performance, before the network or physical building is constructed.

Capabilities

802.11 WLAN Modeling

- Build detailed model of any wireless environment
- Find ideal AP placement
- Set AP channel, IP address, transmit power, antenna type, orientation, height, and 802.11 specifications
- Generate professional bill of materials report
- Access performance metrics

Automatic Wall Extraction

- Reduce the time required to provide environmental details
- Quickly import walls from CAD drawings
- Give each CAD layer a unique attenuation type

Infrastructure

- Create and export projects directly to Cisco Prime
- Eliminates duplicative deployment modeling activities
- Integration increases operational efficiencies

Networks

- Design new 802.11 networks
- Plan migration strategies for legacy networks
- Offers heatmaps for:
 - Signal coverage
 - MCS index
 - Data rates
 - Channel Width and overlap
 - Operating modes
 - WLAN throughput
- Predict best design to minimize rework

Multi-Floor Modeling

- Plan and design wireless access in multi-floor buildings
- Gain insights into bleed-over to adjacent floors
- Visualizations of:
 - Signal strength
 - MCS transmit rate
 - Data rates
 - Channel width
 - Operating mode

AirMagnet® Planner

Wi-Fi Network Planning Tool

Models and Accessories

Models	Contents
AM/A4012	AirMagnet Planner (Standalone)
AM/A4012-1YS	1 year AllyCare Support for AirMagnet Planner — AM/A4012
AM/A4012-3YS	3 year AllyCare Support for AirMagnet Planner — AM/A4012
AM/A4018	AirMagnet Survey PRO (includes Planner)
AM/A4018-1YS	1 year AllyCare Support for AirMagnet Survey PRO (includes Planner) — AM/A4018
AM/A4018-3YS	3 year AllyCare Support for AirMagnet Survey PRO (includes Planner) — AM/A4018

System Requirements

Laptop/Notebook PC/Tablet PC

Operating Systems: Microsoft® Windows 7 Enterprise/Professional/Ultimate or Microsoft Windows 8 Pro/Enterprise 64-bit, Microsoft Windows 8.1 Pro/Enterprise 64-bit, or Microsoft Windows 10 Pro/Enterprise 64-bit

Intel® Core™ 2 Duo 2GHz (Intel® Core™ i5 or higher recommended)

4 GB or higher

800 MB free hard disk space

A site map in a format supported by AirMagnet Survey (supported formats are: .bmp, .dib, .dwg, .dxf, .emf, .gif, vsd, .jpg, .wmf, .vdx or .png)

Apple® MacBook® PRO

Operating Systems: MAC OS X v10.5 (Leopard™) or higher running a supported Windows OS (as noted under Laptop/Notebook PC/Tablet PC section) using Boot Camp®

Intel®-based CPU 1.6 GHz or higher

4 GB or higher

800 MB free hard disk space

A site map in a format supported by AirMagnet Survey (supported formats are: .bmp, .dib, .dwg, .dxf, .emf, .gif, vsd, .jpg, .wmf, .vdx or .png)



netally.com/products/planner